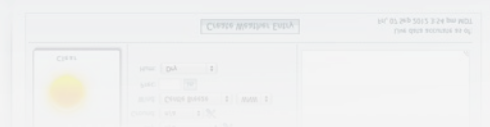
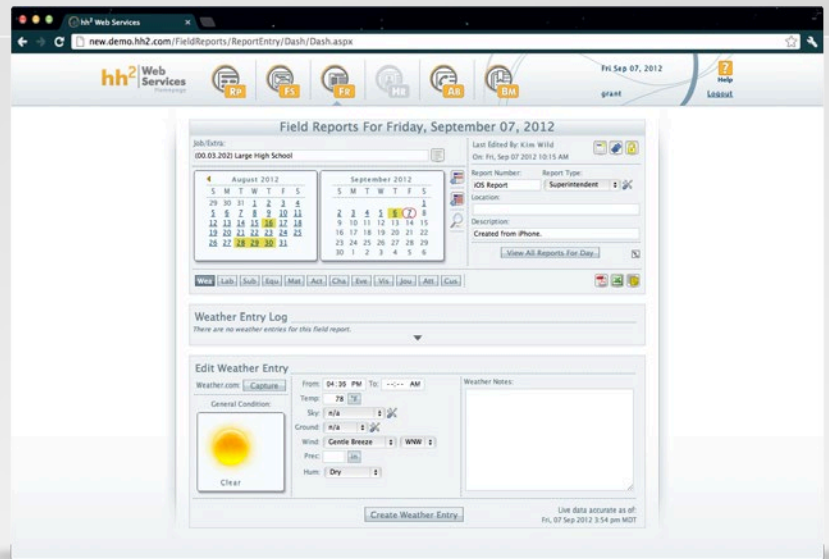


With hh² Field Reports, have the security of knowing that your daily logs are being completed while trusting the authenticity. Take advantage of the simplicity and organization that hh² Field Reports brings to your field processes. Collect and organize field information with ease while allowing searching and reporting anytime, anywhere.

Users login with a username and password to a secure website. Field data is prefilled or keyed in using simple and intuitive forms. Reports are finalized and imported into Sage 300 Construction and Real Estate (formerly Sage Timberline Office) with a click of a button. Project Reports brings in critical project management and job cost data from your Sage 300 installation. A host of valuable reports can then be generated on demand.

- Real-time sync with Sage.
- Export to PDF or Excel.
- Create custom forms.
- Document safety concerns.
- Attach photos and digital voice recordings.



Microsoft Partner



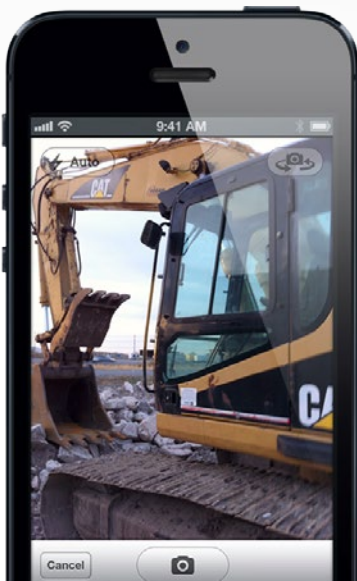
Development Partner

The Cutting Edge

hh² Field Reports provides an elegant solution that works with the latest advances in technology available today. The web interface is ideally suited for laptops and netbooks while the native iPad and iPhone apps provide even greater portability and ease of use.

hh² Field Reports resides in the cloud, so there are no servers to buy and no software to install. You simply pay a one-time setup fee followed by a monthly subscription. hh² Field Reports has a lower setup time and startup cost than any solution on the market, and its monthly fees are competitive with the maintenance fees of other solutions. Since there are no contracts, we have to earn your business each month.

hh² Field Reports is compatible with **Sage 300 Construction and Real Estate** and **Sage 100 Contractor** (formerly **Sage Masterbuilder**). To learn more about what hh² Field Reports can do for your company, please call us or visit us on the web to schedule a brief demonstration.



The hh² Field Reports app lets you take a photo on your iOS device and attach it to any field report.

The Online Advantage

hh² Field Reports is a hosted solution accessible anytime, anywhere. You never have to worry about hardware, IT infrastructure, upgrade, or maintenance costs. It's all included in your initial set-up costs and your low monthly subscription.

In addition, all your field report data is stored in a secure data center in one unified database. You never need to worry about backing up, syncing, or keeping your data up-to-date. All information is updated in real-time which keeps everyone well informed and working together on the same page.

The Technological Advantage

hh² Field Reports is made possible through the latest technological advances including:

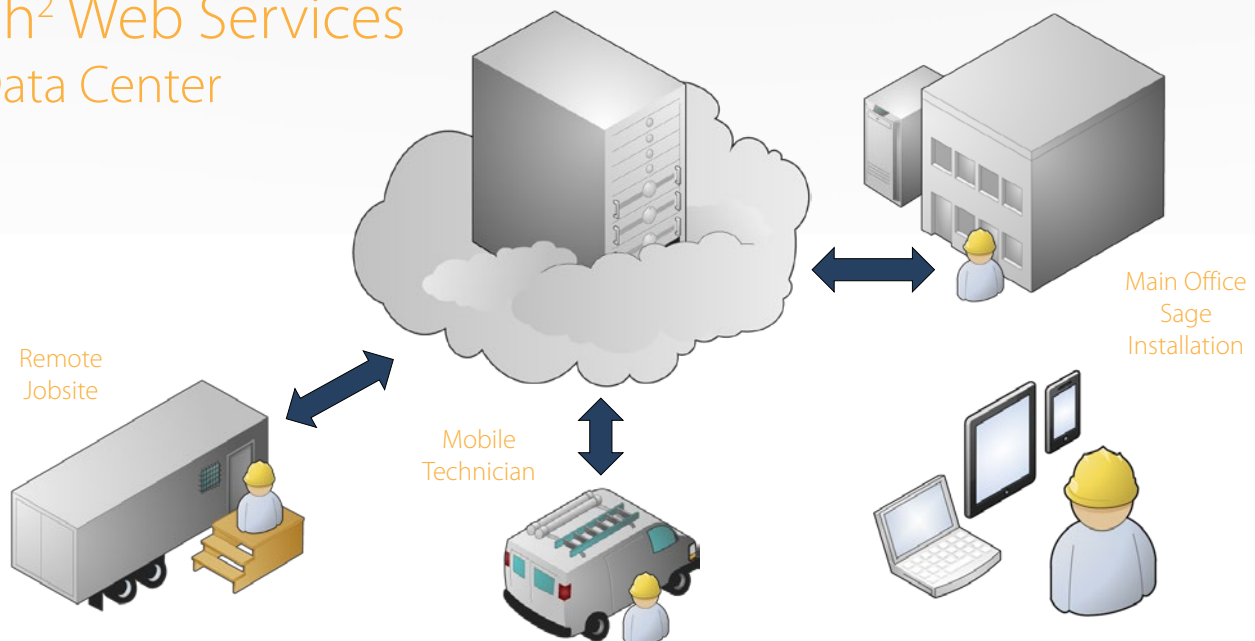
- Windows 2008 R2
- SQL Server 2012
- AJAX
- XML
- Web Services
- NET Framework 4
- Windows Clustering
- Storage Area Networking
- iOS 5.3 for the iPod Touch, iPhone, and iPad

The Secure Advantage

With hh² Field Reports, all your data is hosted off-site in a secure data center. This offers many security and high availability advantages over hosting the data yourself, such as:

- Automatic Encryption
- IP Address Filtering
- Access Logs
- Configurable Password Protection
- 24 Hour Manned Datacenter
- Redundant Utility Connections
- Redundant Internet Connections
- N+1 UPS Battery Backup
- Diesel Generator Power Backup

hh² Web Services Data Center



CPA*Technology
 101 W. Elm St., Suite 500 Conshohocken, PA 19428
 p 610.862.1998 f 610.862.3200 w CPATechnology.net

