



## StarShip Freight

StarShip Freight expands the available shipping solutions for Sage MAS 90 and Sage MAS 200 ERP systems to efficiently integrate packing and shipping into your fulfillment process. Developed for less-than-truckload (LTL) and truckload (TL) shipments, StarShip Freight module shipments are typically placed on pallets and shipped using carriers such as Roadway or Yellow Freight. StarShip Parcel is a separate module developed to ship small to large packages using carriers such as UPS® and Federal Express.

The flexible Sage MAS 90 and 200 interface provides access to item level detail that allows you to print the Bill of Lading (BOL) with little effort and to auto-pack based on your previous shipments. You gain the ability to personalize field maps, and define Sage MAS 90 or 200 fields and translations for shipping options, such as billing type. The flexible design allows you to define fields using a one-to-many relationship. For example, the field *ship via* can transfer information to carrier, method, and billing type.

### Rating Powered by Freightquote.com

StarShip Freight allows you to shop for the best rates using Freightquote.com carriers, your negotiated rates, or a mixture of both. You can quickly view the transit time and freight charges so you can make an informed decision when selecting the carrier. Freightquote.com will also schedule and dispatch a carrier for your shipment and provide tracking information on shipment location and status.

### Simple Pick-and-Pack Functionality

StarShip Freight features a Shipping Assistant that provides simple pick-and-pack functionality and improves efficiencies. As shipments are processed, the Shipping Assistant remembers your packaging scenarios, and will provide those as auto-packing options in the future. In addition, a sophisticated two-tiered approach to packaging captures the item detail for each box, plus the box details for each pallet.

## BENEFITS

Gain immediate efficiencies in shipment processing, accounts receivable, and customer service

Swiftly convert orders into freight shipments, leveraging item detail to automate rating and printing of Bill of Lading

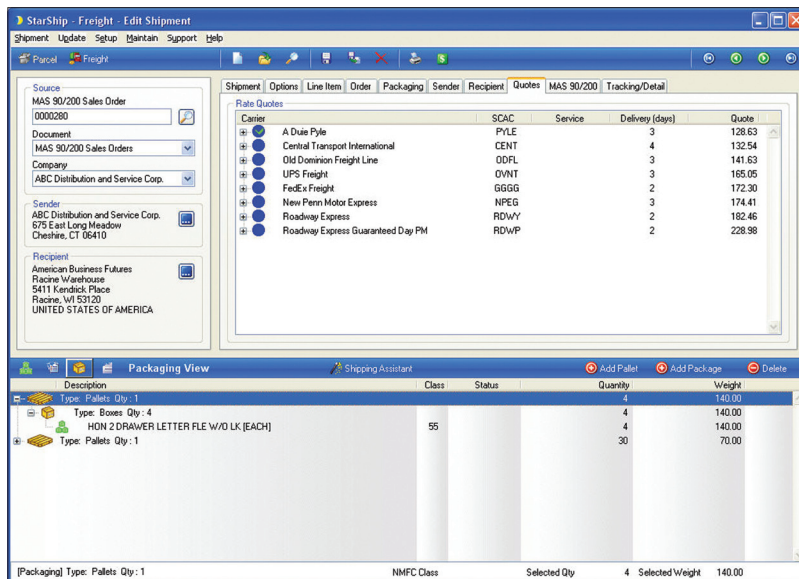
Reduce shipping-related expenses by shipping multiple orders in a single shipment

Capture item, box, and pallet detail using a simple drag-and-drop method in the Shipping Assistant

Access accurate shipping rates across carriers and gain the potential for significant cost savings with rating functionality powered by Freightquote.com

Eliminate duplication of effort using Web-based communication to freight carriers for shipment scheduling and tracking

Prevent invoicing delays with accurate shipping charges added to customer invoices at the time of shipment



Use the Shipping Assistant to package items in the most favorable configuration, access accurate quotes from all available carriers, and select the optimum choice for your shipment.

## FEATURES

<b>Consolidate Multiple Orders on One Shipment</b>	For maximum cost savings, StarShip Freight makes it possible to ship against multiple orders designated for shipment to the same address. Freight charges can be allocated to the invoices generated for each shipped order.
<b>Automatically Create Invoices</b>	StarShip Freight will automatically create an invoice for each order and conveniently include the associated freight charges and tracking information.
<b>Gain Insight on Key Aspects of the Shipment</b>	Different views allow you to quickly drill down on the information that is important to you. Easily preview the lines of a Bill of Lading (BOL) or drill down by item, order, or package.
<b>Personalized Shipping Assistant</b>	You decide the level of shipping detail you want to use. StarShip Freight can provide you with precise details capturing items in each box and assisting with auto packaging, or fewer details by simply listing the ordered items on the BOL.
<b>Automatic Packing Instructions</b>	StarShip Freight automatically provides item packing information for maximum efficiencies in the warehouse. The system remembers which container was used to pack a previous shipment and automatically instructs packaging of subsequent shipments of the same item in the same way.
<b>Update Item Information on the Fly</b>	StarShip Freight stores shipping-related information not found in item maintenance (NMFC code, freight class, packaging, and more) and updates this information as you ship, which eliminates the need to maintain this information in the Inventory module. It is also used to auto-generate the BOL and for auto-pack information.
<b>Shop Rates With Freightquote.com</b>	Find optimum shipping rates and leverage Freightquote.com to gain insight on shipping charges and to help you make informed decisions with options to choose from Freightquote.com, own your negotiated rates, or a mixture of both.
<b>Print Pallet and Package Labels</b>	StarShip Freight supports both laser and thermal label printers and supplies several bar code and non-bar code formats.
<b>Intuitive Data Mapping</b>	Personalize your shipping fields and translations; you can use one field in Sage MAS 90 or 200 to translate into many StarShip fields.

## ABOUT SAGE SOFTWARE

Sage Software supports the needs, challenges, and dreams of more than 2.7 million small and mid-sized business customers in North America through easy-to-use, scalable, and customizable software and services. Our products help manage a complete range of business functions including: accounting, operations, customer relationship management, human resources, time tracking, merchant services and the specialized needs of the construction, distribution, healthcare, manufacturing, nonprofit, and real estate industries.



**CPA Technology**  
 101 W. Elm St., Suite 500 Conshohocken, PA 19428  
 p 610.862.1998 f 610.862.3200 w CPATechnology.net