



Sage Master Builder Estimating Standard and Extended

Maximize your productivity and profitability by generating more accurate, error-free estimates in less time than ever before with Sage Master Builder Estimating Standard and Extended. These two editions bring the strength of the industry-leading estimating solution from Sage Timberline Office to Sage Master Builder. Integrated with your Sage Master Builder system, you'll get the power you need to meet deadlines with ease while presenting the kind of comprehensive, precise estimates that win you more jobs and increase revenue.

Simplified setup

Spend less time getting started and more time growing your business. The time-consuming task of setting up and building an estimating database has been streamlined with the Database Builder Wizard. The Wizard walks you through the necessary steps of establishing your database more quickly and efficiently, saving you time and money and allowing you to take full advantage of the Estimating software sooner.

Easy to learn

Estimating includes a comprehensive online help system that slashes the learning curve. You can use online help to walk step-by-step through many of the common estimating tasks. You can also do key word searches, review the table of contents, and locate answers to your questions by topic. These capabilities make Estimating extremely easy to learn— a good tool for getting new estimators up to speed quickly.

Advanced spreadsheet capability

With the Estimating spreadsheet, everything you need to build an estimate is available with the click of a mouse. It's easy to rename and move columns around, as well as open and compare several estimates at once. Even drag items from one spreadsheet into another for quick creation of new or alternate estimates.

Want to view your work by location? You can do that too. In fact, with the click of a mouse you can look at your estimate by division or item, takeoff order, assembly, bid item or other user-defined Work Breakdown Structure (WBS) code. You can also create and save unlimited, personalized views of the spreadsheet while you work. So later, you can see the estimate just the way you need to during review. Plus estimates can be viewed in full detail or summarized to the major estimate divisions.

Ever lose work due to computer or power problems? Or, forget to save your work? Don't worry. Unlike typical memory-based spreadsheets, Estimating's disk-based spreadsheet resides on your hard drive. So you never have to save your estimate. Or worry about losing your work.

BENEFITS

Maximize productivity and profitability by creating more bids in less time.

Win more jobs and curb risks with accurate and error—free estimates.

Save time by eliminating the need to re-key estimated costs into your accounting system.

Minimize or eliminate the need for duplicate data entry into your accounting system that can result in errors or omissions.

Get up and running quickly with innovative database setup tools—such as Database Wizard—and an intuitive, Excel-like user interface backed by powerful industry-specific databases.

Organize, manage, and analyze your estimates with Estimating Explorer, an incredibly efficient management tool.

Automate information sharing and decrease many report requests when you electronically share estimate details with project managers or departments other than accounting.

Deliver customized, professional-looking reports for clients and key decision makers with easy-to-use reporting capabilities.

Fast takeoff

For true flexibility when doing takeoff, Sage Master Builder Estimating Standard and Extended gives you several options—all designed to generate more accurate estimates, in less time:

Quick takeoff—Simply drag one or more items from the database directly into the spreadsheet. Enter dimensions and the software automatically calculates all quantities and costs for you.

Item takeoff—If you want to work with database items before they go into your estimate, you can drag them into the item takeoff window. When you're ready, just click the OK button to add them to your spreadsheet.

Smart Assemblies takeoff—Save time by doing takeoff for all the items of a wall, door, concrete slab or other building component in just one step. Estimating databases include a variety of common assemblies that you can use as-is or modify. Or you can build your own.

Estimating Explorer

The key to estimate control is organization. Estimating Explorer eliminates time-intensive searches by automatically creating an up-to-date master list and description of every estimate in your system. Within seconds you can sort your estimates by estimator, bid date, estimate number or a variety of other criteria to locate an estimate. Once you do, you're just one click away from the estimate's spreadsheet.

Managing your estimates also means understanding the big picture. Estimating Explorer not only organizes your estimates, but gives you the tools to stand back and analyze your work. Need to know what your estimating volume is by estimator? Or your year-to-date estimate volume? You can find these and many other answers using Estimating Explorer's management reports and graphs. Estimate information can also be exported directly to Microsoft Excel for further analysis or custom graphing.

Presentation-quality reports

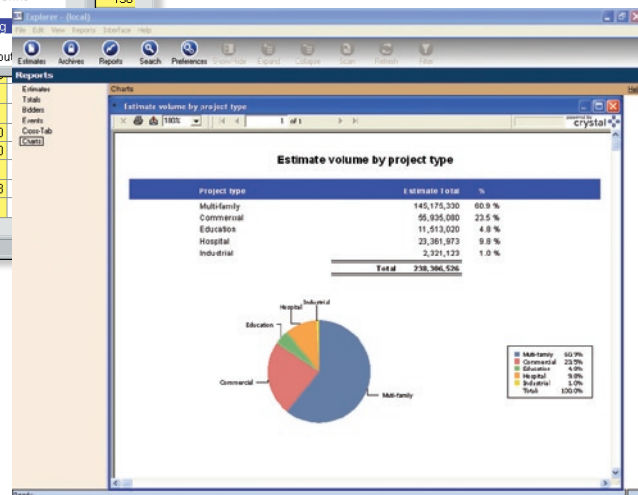
These days, your numbers have to look good. We're talking different type fonts and sizes, bolding, italic, and colors. With Estimating, you can produce professional-looking, easy-to-understand reports for clients and the management team.

Not only can you control the look of your reports, you control the content. Create custom headers and footers and include graphics. And Estimating's WYSIWYG (what you see is what you get) reporting lets you quickly strip, add to, and tweak the estimate just the way you want before you print. Professional reporting has never been simpler.

Group	Phase	Description	Takeoff Quantity	Labor Price	Labor Amount	Material Price	Material Amount
	2220.55	Backfill - Walls					
		Backfill Walls	533.333 cuyd	12.25 /hour	3,267	3.00	1,680
	2511.00	Paving Asphalt					
		Asphalt Paving Lab./Equip Only	1,753.889 s				
		E Asphalt Material	97.438 c				
		Crusher Run Base	292.315 c				
	2527.00	Paving Concrete Curb					
		Curb & Gutter Conc 3000 psi	722.222 c				
		Curb & Gutter Forms Steel Type	15,600.000 lf				
		Strip/Oil Forms-Curb & Gutter	15,600.000 lf				
	2831.00	Fence - Chain Link					
		Fence ChainLink Complete	48,000.000 lf				
	2842.00	Barrier - Pipe Bollards					
		Pipe Bollard Steel Pipe 6"	12,000 c				
	3000.00	CONCRETE					
	3111.00	Forms - Footings					
		Keyway In Footing	600.000 Inft	20.00 /hour	240		
		Keyway In Footing	75.000 Inft	20.00 /hour	30		
	3127.00	Forms - Edgeform Slabs					
		EdgeForm 2x6 Random Length	16.600 Inft	20.00 /hour	33		
	3130.01	Forms - Edgeform at Walks					

◀ For fast takeoff, simply drag items from the database into the Estimating interactive worksheet.

Estimating Explorer offers you a variety of reports and graphs to help you better manage your estimates. ▶



Modules

Applications

- Sage Master Builder Estimating Standard—Combines key estimating efficiencies with all the ease-of-use, intuitive, point-and-click, drag-and-drop technology.
- Sage Master Builder Estimating Extended—Offers the most comprehensive package of advanced estimating tools with the power of the Standard version, plus adds even greater takeoff, analysis and productivity capabilities.
- Cut & Fill—Determines site work quantities in minutes, at an accuracy level difficult to match, using manual takeoff methods.
- Database Editor—Utilizes a set of powerful tools for streamlined setup and easy maintenance of the estimating databases.
- Digitizer Standard—Generates linear and area dimensions, and counts quickly and accurately. Automate your entire digitizing process and reduce all your manual spreadsheet and paper calculations.
- Digitizer Extended—Builds a standardized or estimate-specific dimension list for use throughout the entire takeoff process. In addition to name, quantity, unit and type, a digitized image is stored and can be referenced and recalled at any time from the dimensions list, the spreadsheet quantity cell, or the dimension/variable pane within the assembly takeoff window.
- ePlan Takeoff—Connects Estimating to On Center's On-Screen Takeoff™ to generate counts and quantity takeoffs directly from electronic drawings for instant use in your estimate.
- Estimating Explorer—Provides tools to organize, manage, analyze, and report on hundreds of estimates with ease.
- Estimating Report Manager—Simplifies the task of reporting on estimates. For sophisticated analysis and reporting needs, export estimate data into a reportable file to use with Crystal Reports® or Microsoft Access.
- Estimating TRA-SER Integrator—Automates item pricing, giving you the ability to import and update your database with item pricing from Trade Service's TRA-SER Premier solution.
- Estimating Viewer—Estimating experience not required! Viewer makes it possible for anyone to view, print, sort, and report on estimates, while protecting the integrity of your estimate by not allowing changes.
- License Manager—Eliminates the need for machine specific devices and allows you to manage the estimating licenses from a central location—even check out licenses to work offsite.

Shane Peterson was working on an estimate for a 25-acre grading project when he told his salesman the parameters of the project. "It took him three minutes, and he gave me an estimate I could use. That would have taken me at least six hours to do manually," Peterson said.

- Scheduling Integrator—Integrates your estimate details to industry-standard scheduling software such as Primavera or Microsoft Project.
- Buyout—Helps you quickly and accurately turn detailed estimates into RFQs and purchase orders.
- Model Estimating—Assists in creating detailed conceptual estimates using a series of questions as well as providing a method for doing form-based takeoff and spec-driven takeoff.*

Estimating Databases

- Industry-specific knowledgebases—Built-in intelligence prompts you for only the data needed to calculate quantities and costs for groups of items and assemblies for an entire model, home or commercial structure.
- Industry standard RSMMeans databases—Multiple databases are populated with everything from site work items to electrical components. These databases contain all the items in the RSMMeans books and even allow you to electronically update the estimate using the city cost information. You can also get yearly price updates to keep your pricing current.
- Industry-specific estimating databases—Although pre-built with thousands of items in the database, modifications to pre-defined formulas, productivity, and conversion factors can be customized for your specific needs. Additionally, a large number of Smart Assemblies are included and supported using built-in intelligence to prompt you for only the data needed to calculate costs for a given construction system such as a wall. As with items, Smart Assemblies can also be modified.

*Available only with Extended version

Also available as part of the estimating suite of solutions is Sage Master Builder Estimating Basic.

Group	Phase	Descr	Quantity	Labor Cost/Unit	Labor Price	Labor Amount	Material Price	Material Amount	Sub Amount	S
2000.000		SITWORK				74		9		
	2315.021	Earthwk: Excav Foot				50				
		Excavate Footing By Machine	7.41 cy	4.00 /cy	20.00 /hr	30	-	-	-	
		Shape & Grade Footing	100.00 sf	0.20 /sf	20.00 /hr	20	-	-	-	
	2315.070	Backfill: Foot Wall Misc				24				
		Backfill Footings	2.41 cy	10.00 /cy	20.00 /hr	24	3.60 /cy	9	-	
3000.000		CONCRETE				104		512	1,000	
	3110.100	Forms: Footings				20		46		
		Keyway in Footing	50.00 lf	0.40 /lf	20.00 /hr	20	0.90 /lf	46	-	
	3300.910	Misc: Set Grade Pins				10		12		
		Set Grade Pins at Footing	50.00 lf	0.20 /lf	20.00 /hr	10	0.24 /lf	12	-	
	3310.140	Conc: Footings				74		453	1,000	
		Footing Conc 3000 psi	3.70 cy	10.00 /cy	20.00 /hr	37	59.40 /cy	227	1,000	
		Footing Conc 3000 psi	3.70 cy	10.00 /cy	20.00 /hr	37	59.40 /cy	227	-	
6000.000		WOOD & PLASTICS				371		391		
	6090.010	Fasteners: Frame Anchors				10		8		
		Shot Anchors	25.00 ea	0.40 /ea	20.00 /hr	10	0.30 /ea	8	-	
	6091.010	Fasteners: Nails						182		
		Nails - 16d common	1.00 box	-	-	-	60.00 /box	82	-	
		Sheetrock Nails 1-3/4 x 10 ga.	16.00 lb	-	-	-	6.00 /lb	100	-	
	6110.010	Framing: Plates				29		18		
		Plates 2x4 RL	52.50 lf	0.56 /lf	20.00 /hr	29	480.00 /mbf	18	-	
	6112.010	Framing: Studs 2x4 > 2x8				214		133		
		Studs 2x4x 8	50.00 ea	4.28 /ea	20.00 /hr	214	480.00 /mbf	133	-	
	6117.020	Blocking: Misc.				117		70		
		Blocking 2 x 4 R.L.	210.00 lf	0.56 /lf	20.00 /hr	117	480.00 /mbf	70	-	
9000.000		FINISHES				600		240		
	9131.010	GWB: Boards & Sheathing				400		240		
		GWB 1/2" All Size Regular	800.00 sf	0.50 /sf	20.00 /hr	400	0.30 /sf	240	-	
	9132.010	GWB: Finish MudTape				200				
		Labor GWB Finish All Steps	800.00 sf	0.25 /sf	20.00 /hr	200	-	-	-	

◀ The integration of Estimating with your accounting system will save time and reduce errors by minimizing rekeying of data.