

Sage Master Builder



Sage Master Builder | Version 16 Enhancements

Simple. Efficient. Better Just like you want your business to be.

It's competitive out there. You know that. But if you want to give your team the edge they need to be successful, you need a business management solution that eliminates barriers to your financial information, not the opposite.

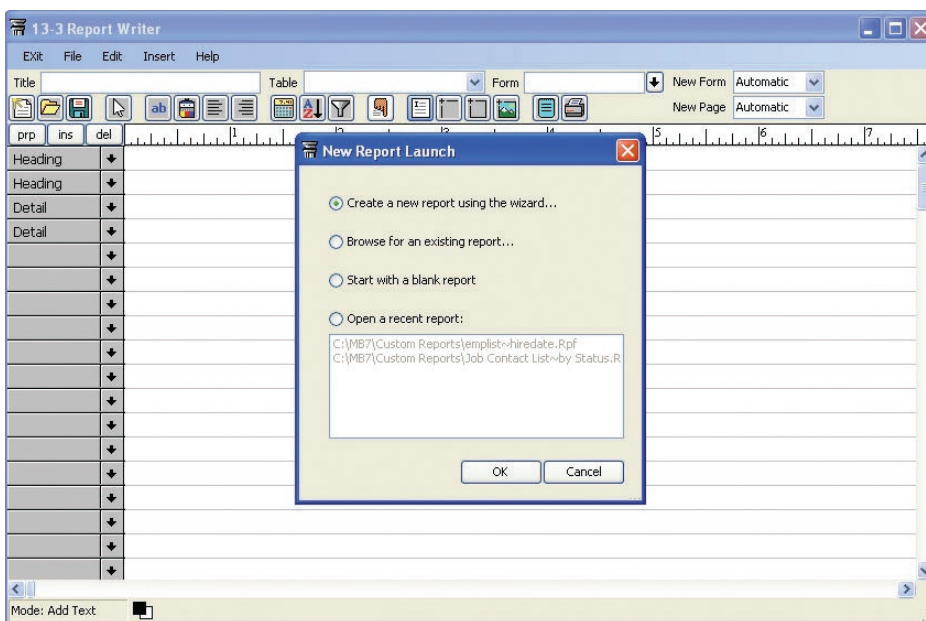
Now, with Version 16, Sage Master Builder gives you more of the integrated tools your team needs to work smarter, faster, and more cohesively than ever so you can more efficiently manage the complexities of running your construction business with:

- A simplified and more intuitive report writing wizard that lets you generate and customize reports in fewer steps.
- More efficient contact management that allows you to quickly manage, edit, and sort multiple contacts, even when dealing with contacts from the same company.
- New and improved Microsoft Excel integration that makes customizing spreadsheets easy and more accurate than ever because both values and formulas are automatically exported to Excel.
- More sophisticated report writing capability that lets you dig deeper into your data while allowing you to present it in more useful ways.
- And much more!

Sage Master Builder Version 16 includes comprehensive reporting, e-filing, and payroll capabilities. Plus, it enables you to easily integrate estimating, production, scheduling, accounting, and analysis data in one convenient and easy-to-access location that takes your team's efficiency to an entirely new level. With Version 16, you can see your construction business from every possible angle with powerful functionality that allows you to:

Create better, custom reports in fewer steps

Streamlined report writing customization lets you dig deeper into your data while allowing you to present it in more useful ways. It's all about giving you more flexibility and the ability to do more with the data you have. Sage Master Builder Version 16 includes a powerful report writing wizard, so it's easier to create, modify, and edit your reports. And, with a simplified and more intuitive report writing wizard, generating and customizing your reports takes fewer steps. Version 16 also provides you with better reporting tools that improve insight into the health of your business. And the better visibility you have, the easier you can make decisions with confidence.



◀ **Look at your business your way**
Dive deeper into the details that matter to you with our most sophisticated custom report writing tool. Version 16 makes it easier to create, modify, and edit your reports so you're able to glean more intelligence from your data.

Save time and streamline communication with a new and improved Contact Manager

Now with a centralized Contact Management menu option, Version 16 makes internal and external communication faster, easier, and more intuitive. New time-saving functionality includes:

- **Microsoft Outlook integration** that allows you to create email right from within Sage Master Builder. Easily generate email to multiple Microsoft Outlook contacts and Sage Master Builder company data sets simply by highlighting and clicking.
- **More efficient contact management** with the ability to quickly manage, edit, and sort multiple contacts, even when dealing with contacts from the same company.
- **Sync Microsoft Outlook contacts with ease** and access throughout your organization, including mobile devices that support Microsoft Outlook.
- **New contact grids on Jobs, Clients, Vendors, and Employees** let you add multiple contacts to store information such as the contact name, job title or description, phone number, extension, fax number, email address, cell phone number, and other phone numbers.

Row	Contact Type	Contact Record	Short Name	Link with Outlook	Unique Contact	Contact Name	Job Title	Phone#	Extension	Email	Cell Phone#	Fax#	Other#	Other Description
1	Client	124 - Robinson - Williams	Robinseder	Sync		John Clark	Proj. Mgr	(999) 555-2599				(999) 555-5746		
2	Client	127 - Board of Education	Board of Educ.	Sync		Sharon White		(999) 555-0945	71	svwhite@state.com		(999) 555-6763	(999) 555-9833	
3	Client	131 - Hotel Inc	Hotel Inc	Sync		Sandra Turner		(999) 555-7772				(999) 555-8036	(999) 555-7773	
4	Client	135 - Margaret Fuller	Fuller	Sync		Margaret Fuller	Owner	(999) 555-6330						
5	Client	135 - Margaret Fuller	Fuller	Sync		Chloe Hart	Secretary	(999) 555-6332					(999) 555-6331	
6	Client	136 - Lamb Shoes, Inc	LRS, Inc.	Sync		Megan Stewart	VP - New Markets	(999) 555-0550					(999) 555-1729	
7	Client	137 - City of Barstow	Barstow	Sync		Matt Tudler	Road Manager	(999) 555-2222	5	mtudler@rte66.org				
8	Client	139 - George Olson	Olson	Sync		George Olson	Owner	(707) 582-9936					(707) 582-9937	
9	Client	139 - City of Modesto	Modesto	Sync		Dennis Sullivan	Project Manager	(620) 555-9783		Dennis@cityofmodesto.gov	(620) 555-1619	(620) 555-9784		
10	Job	186 - Williams Post Office	Progress Bill	Sync		John Clark		(999) 555-2328						
11	Job	201 - Tappan Motel	Progress Bill	Sync		Andrew Sanders		(999) 555-7103					(999) 555-7104	
12	Job	207 - Wood Elementary School	Progress Bill	Sync		Sharon White		(999) 555-6264					(999) 555-6273	
13	Job	215 - Jimenez Barrito #8	Barrito 8	Sync		David Graves		(999) 555-9877					(999) 555-9872	
14	Job	216 - Jimenez Barrito #10	Barrito 10	Sync		David Graves								
15	Job	220 - Lamb Shoes	T & M	Sync		David Graves		(999) 555-2393						
16	Job	221 - Bike Path for Rte 66	Unitary Bill	Sync		Matt Tudler		(999) 555-2222						
17	Job	222 - Big Redwood Tree Hotel	Loan Draw	Sync		Gary Banks		(999) 555-9927				(999) 555-9620		
18	Job	223 - Main Street Post Office	Unitary Job	Sync		Dennis Sullivan		(620) 555-9783				(620) 555-9784		
19	Job	224 - Walking Shoes Shop	% Complete	Sync		George Olson		(707) 582-9936				(707) 582-9937		
20	Vendor	1 - Peterson Construction	Peterson	Sync		Lauren Peterson		(800) 555-6278		lpeterson@petersonconstruction.com			(999) 555-9788	
21	Vendor	2 - Gray Heating & Cooling	Gray Heating	Sync				(999) 555-4220		est@grayheating.com				
22	Vendor	3 - Nations Bolt & Hardware Co	Nations Bolt	Sync				(999) 555-8566					(999) 555-9220	
23	Vendor	4 - Ramirez Materials	Ramirez	Sync				(999) 555-8570		Sales@ramirezmaterials.com				
24	Vendor	5 - Westside Waste Management	Westside Wa...	Sync				(999) 555-0291						

◀ **Managing your contacts couldn't be any easier**
Version 16 lets you generate email to multiple Microsoft Outlook contacts right from Sage Master Builder. Just highlight and click to create emails to multiple Microsoft Outlook contacts and Sage Master Builder company data sets.

Get more out of your spreadsheets with better Microsoft Excel integration

Now when you export your data to Excel you can generate better, more useful reports with improved integration that provides you with:

- **More options after exporting to Excel** so modifying spreadsheets is easier than ever.
- **More legible, user-friendly spreadsheets** because the exported data is properly coded and formatted in Excel.
- **More customization** because both values and formulas are exported to Excel in numeric form, this enables Excel to calculate spreadsheets automatically, saving you time.

7.2 Company Information C:\MB7\Sample Compan...

General Information Direct Deposit Setup Email/Fax Configuration

Company Bank Information for Direct Deposit

Routing# 121000358
Account# 9999999999
Account Type 1 - Checking

Options for Direct Deposit ACH File

Origin Bank Name
Destination Bank Name
Optional Bank Routing#
ID Code Designator (ICD) 1

For 'Immediate Origin Name' in file header record, use:
 your company name Origin Bank Name

For 'Immediate Destination Name' in file header record, use:
 blank Destination Bank Name

For 'Immediate Origin' in file header record, use:
 your company FEIN your routing#

For 'Immediate Destination' in file header record, use:
 your routing# Optional Routing#

Other options:
 Include Company Debit Line
 Include Optional Hard Return
 Include Optional '9' Fill

State Tax Id#
Enter the routing/transmission number of the bank account

More comprehensive tax filing capabilities and improved payroll management

Now includes 1099 forms and e-filing capabilities to make your payroll process more automated.

◀ **NEW Automated Clearing House (ACH) options**
New ACH options provide support for more financial institutions, and the Direct Deposit tab now includes options for Direct Deposit ACH File section.