

Sage Construction and Real Estate Solutions

Digitizer Extended

Digitizer Extended lets you quickly and accurately generate linear, area, and counted takeoff in a matter of seconds.

Building on the core Digitizer application, Digitizer Extended saves you even more time by automating the entire digitizing process and further reducing manual spreadsheet and paper calculations.

Information at your fingertips

Much of the timesaving benefits of Digitizer Extended reside in its estimator-friendly dimension list. Rather than having to jot down digitized dimensions on a separate piece of paper or run manual calculations with an outside spreadsheet program, you can use Estimating for Sage Timberline Office and Sage Master Builder to automatically set up a customized dimension list. The dimension list stores all your regularly used dimensions that you can call on to complete an existing estimate or save for use with future estimates on similar jobs. So, you only build your dimension list once, not every time you start a new estimate.

Build it the way you want it

Build your dimension lists to your exact specifications. Start from scratch by digitizing calculations to create a new dimension list. Or, import an existing dimension list from a previous estimate. Once imported, you can custom-tailor your dimension list by making all the edits and additions you want. Then, when you're ready, switch over to the estimate spreadsheet and automatically fill quantity cells based on the calculations stored in your dimension list.

A picture is worth a thousand keystrokes

Not only does the dimension list hold all your digitized calculations, it also acts as a photo album of sorts, storing all your digitized images. Imagine pulling up a building area or perimeter calculation and being able to see the corresponding digitized image right there on your screen. Images can be saved as any standard picture file (BMP, TIF, JPG). Or, for even greater storage capacity, save your images as a compressed encapsulated metafile (EMF).

The power of instant recall

You can reduce even more keystrokes by taking advantage of Digitizer Extended's recall dimension function. A click of the mouse lets you access your dimension list directly from the quantity cell in the estimate, pre-filling quantities on the spot. You can also access your dimension list from the takeoff screen, saving multiple quantities, dimensions and images associated with any given assembly. What's more, Digitizer Extended's recall perimeter function lets you automatically pre-fill the quantity cell with the last digitized perimeter, saving even more time and keystrokes.

A screen with a view

The Digitizer Extended window is always open and running in the background, so when you're ready to digitize, simply click on the window and you're off and running. And, you can resize and reposition the digitizer window any way you'd like, so you can keep an eye on both the estimating screen and the digitizer screen at the same time.

BENEFITS

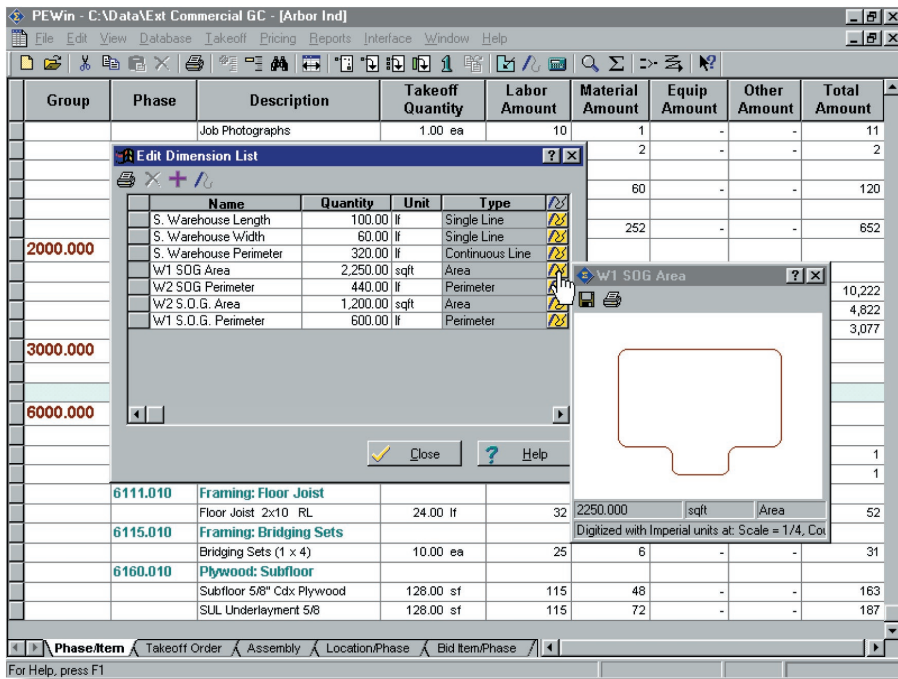
- Eliminate the need for manual calculations
- Quickly and more accurately calculate linear, area and counted takeoff
- Save time and automate processes by electronically sharing calculated dimensions with estimating spreadsheet
- Easily store and access graphical audit trail for items
- Reuse the work you've already done by storing and recalling a list of dimensions

Features

Digitizer Extended allows you to count objects and digitize single lines, continuous lines, and areas with an on-screen display for instant identification of errors and omissions. The software is accurate up to 1/1000 of an inch, comes complete with an online help system and is compatible with virtually any digitizer hardware that uses a 32-bit WinTAB driver. In addition, the Digitizer Extended version provides the following added benefits and more:

- Create a customizable dimension list including the name, quantity and image associated with calculations.
- Digitize an item and transfer the details and corresponding images directly to the dimension list for later use.

- Automatically import an existing dimension list and edit it on the fly.
- Immediately recall the dimension list or the last perimeter digitized from the estimating spreadsheet quantity cell or the item or assembly takeoff screen.
- Access quantities and images while working in review assemblies mode within Sage estimating software.
- Continuously display the digitizer window without having to re-launch the digitizer program.
- Resize the digitizer window or reposition it anywhere on the screen.



◀ Access your dimension list and the corresponding digitized image directly from the item or assembly takeoff screen. Automatically fill quantity cells in your estimate by simply clicking on an item in your dimension list.

Digitizer is part of the Sage Construction and Real Estate family of fully integrated software created to streamline work and connect the people you depend on to build your business.