



CSS FRAMING CONTRACTOR DATABASE

The Construction Support Services Framing Contractor database has over 1700 items of work covering all phases of wood framing construction arranged in chronological format.

Starting with the basement level we progress upward through 1st, 2nd and 3rd floor construction then to roof framing and finish off with soffits, siding and door and window installation.

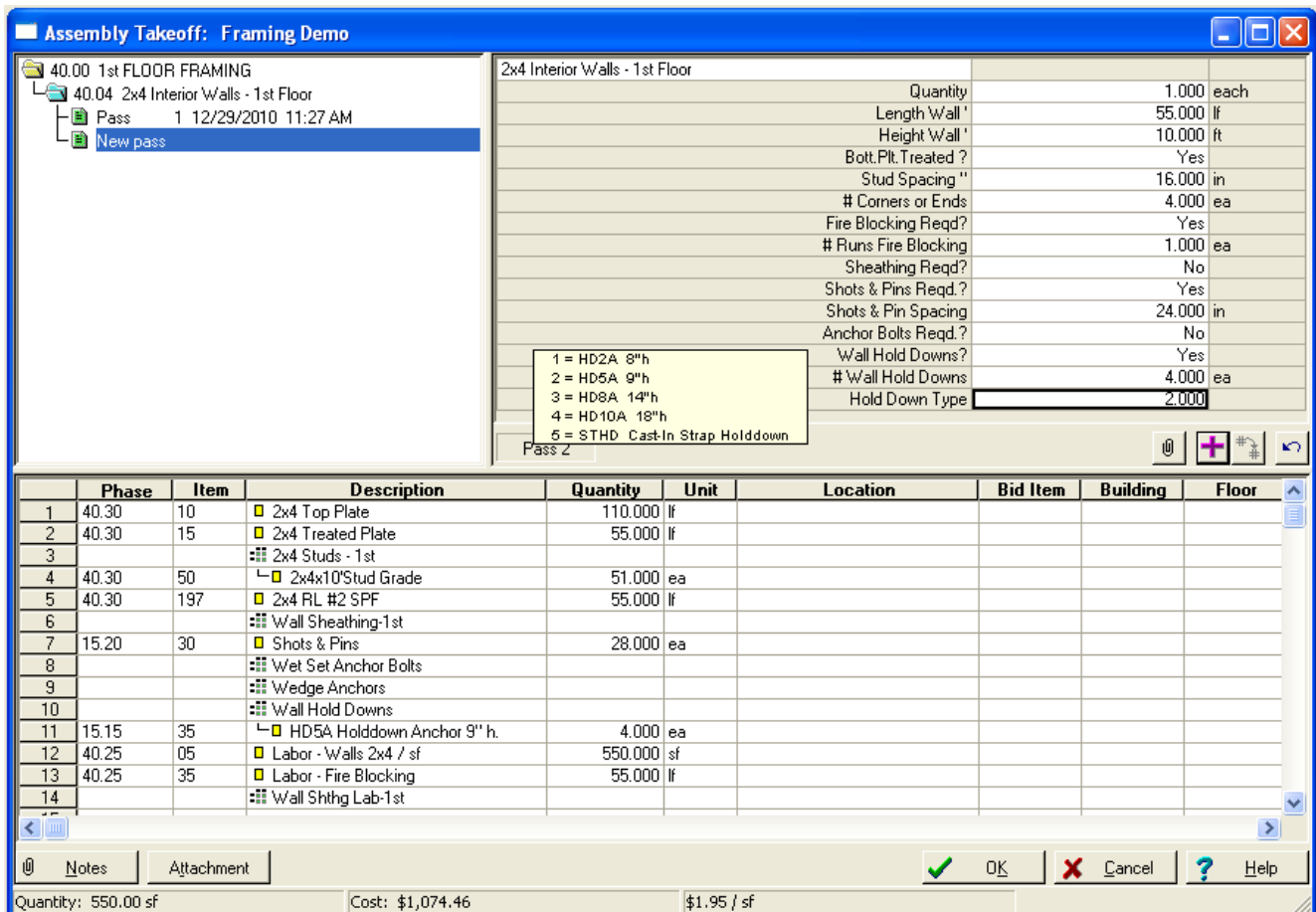
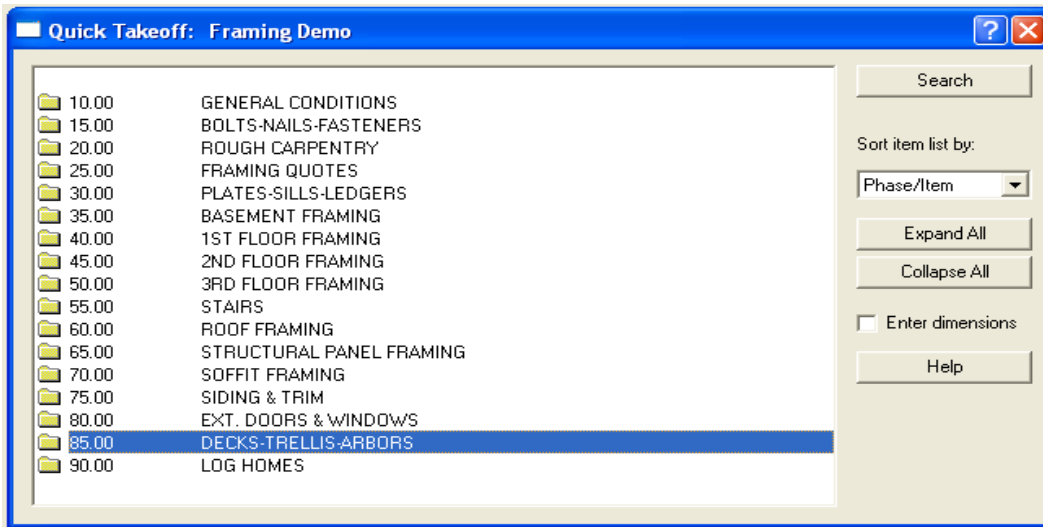
This database is complete labor, material and sub contract unit pricing which can be modified by the end user with their specific historical data.

The database includes assemblies with extensive assembly help for all phases of work which includes typical drawing details and photos of each assembly with help notes to guide the estimator through the take off process.

Database Specifications

Over 120 Phases
 Over 1700 Items
 Over 150 Formulas
 Over 100 Material Classes
 Over 80 Assemblies

<u>Phase</u>	<u># of Assemblies</u>
Rough Carpentry	4
Basement/Walkout	13
1 st Floor	17
2 nd Floor	17
3 rd Floor	17
Stairs	1
Roof	5
SIP Panels	2
Soffit/Fascia	2
Siding/Trim	4
Exterior Doors/Windows	2
Decks/Trellis/Arbors	5



Assembly Takeoff: Framing Demo

60.00 ROOF FRAMING
 60.15 Jack Rafters
 Pass 1 12/29/2010 11:29 AM
 Pass 2 12/29/2010 11:30 AM
 New pass

Jack Rafters

Quantity: 1.000 each
 Shortest Rafter Span: 1.000 ft
 Roof Pitch: 6.000
 # of Hip Sides: 2.000 ea
 Nominal Size: 2x10 = 210
 Longest Rafter Span: 16.000 ft
 Includ. Longst. Rafter?: Yes
 Roof Area: sf

2x4 = 24 1x4 = 14
 2x6 = 26 Other lumber sizes
 2x8 = 28 are selected in sim
 2x10 = 210 fashion. 6x14 = 614
 2x12 = 212 10x16 = 1016.

Phase	Item	Description	Quantity	Unit	Location	Bid Item	Building	Floor
1		Jack Rafter 08						
2	60.10	2x10 x 8 #2 SPF	8.000	ea				
3		Jack Rafter 10						
4	60.10	2x10 x 10 #2 SPF	4.000	ea				
5		Jack Rafter 12						
6	60.10	2x10 x 12 #2 SPF	4.000	ea				
7		Jack Rafter 14						
8	60.10	2x10 x 14 #2 SPF	4.000	ea				
9		Jack Rafter 16						
10	60.10	2x10 x 16 #2 SPF	3.000	ea				
11		Jack Rafter 18						
12	60.10	2x10 x 18 #2 SPF	1.000	ea				
13		Jack Rafter 20						
14		Jack Rafter 22						
15		Jack Rafter 24						
16		Jack Rafter 26						
17		Jack Rafter 28						
18		Jack Rafter 30						
19		Jack Rafter 32						
20		Jack Rafter 34						
21		Roof Frame Labor						
22	60.05	Roof Framing 4/12 - 6/12 Pitch	2,012.400	sf				

Quantity: 2.00 Cost: \$1,806.73 \$903.37 /

Phase	Description	Takeoff Quantity	Labor Productivity	Labor Cost/Unit	Labor Quantity	Labor Amount	Material Price	Material Amount	Sub Price	Sub Amount	Total Amount
	BOLTS-NAILS-FASTENERS										
15.15	STRAPS-HANGERS-HOLD DOWNS										
	HD5A Holddown Anchor 9" h.	4.00 ea	-	-	-	-	10.78 /ea	43	-	-	43
15.20	FASTENERS										
	Shots & Pins	28.00 ea	-	-	-	-	0.25 /ea	7	-	-	7
	1ST FLOOR FRAMING										
40.25	WALL LABOR										
	Labor - Walls 2x4 / sf	550.00 sf	0.071 hr / sf	1.14 /sf	39.05 hr	625	-	-	-	-	625
	Labor - Fire Blocking	55.00 lf	0.150 hr / lf	2.40 /lf	8.25 hr	132	-	-	-	-	132
40.30	WALL FRAMING MATERIAL										
	2x4 Top Plate	110.00 lf	-	-	-	-	0.51 /sf	37	-	-	37
	2x4 Treated Plate	55.00 lf	-	-	-	-	0.71 /sf	26	-	-	26
	2x4x10 Stud Grade	51.00 ea	-	-	-	-	0.55 /sf	187	-	-	187
	2x4 RL #2 SPF	55.00 lf	-	-	-	-	0.48 /sf	18	-	-	18
	ROOF FRAMING										
60.05	ROOF FRAMING LABOR										
	Roof Framing 4/12 - 6/12 Pitch	2,012.40 sf	0.048 hr / sf	0.77 /sf	96.60 hr	1,546	-	-	-	-	1,546
60.10	2X ROOF FRAMING MATERIAL										
	2x10 x 8 #2 SPF	8.00 ea	-	-	-	-	0.57 /sf	61	-	-	61
	2x10 x 10 #2 SPF	4.00 ea	-	-	-	-	0.57 /sf	38	-	-	38
	2x10 x 12 #2 SPF	4.00 ea	-	-	-	-	0.57 /sf	46	-	-	46
	2x10 x 14 #2 SPF	4.00 ea	-	-	-	-	0.57 /sf	53	-	-	53
	2x10 x 16 #2 SPF	3.00 ea	-	-	-	-	0.57 /sf	46	-	-	46
	2x10 x 18 #2 SPF	1.00 ea	-	-	-	-	0.57 /sf	17	-	-	17