



## **CSS UNDERGROUND UTILITIES DATABASE**

The Construction Support Services Underground Utilities database has over 4500 items of work covering all phases of utility construction including Water, Sanitary Sewer, Storm Sewer, Manholes, Gas Service and Misc Concrete work.

This database is complete with labor, material and sub contract unit pricing which can be modified by the end user with their specific historical data.

### **Database Specifications:**

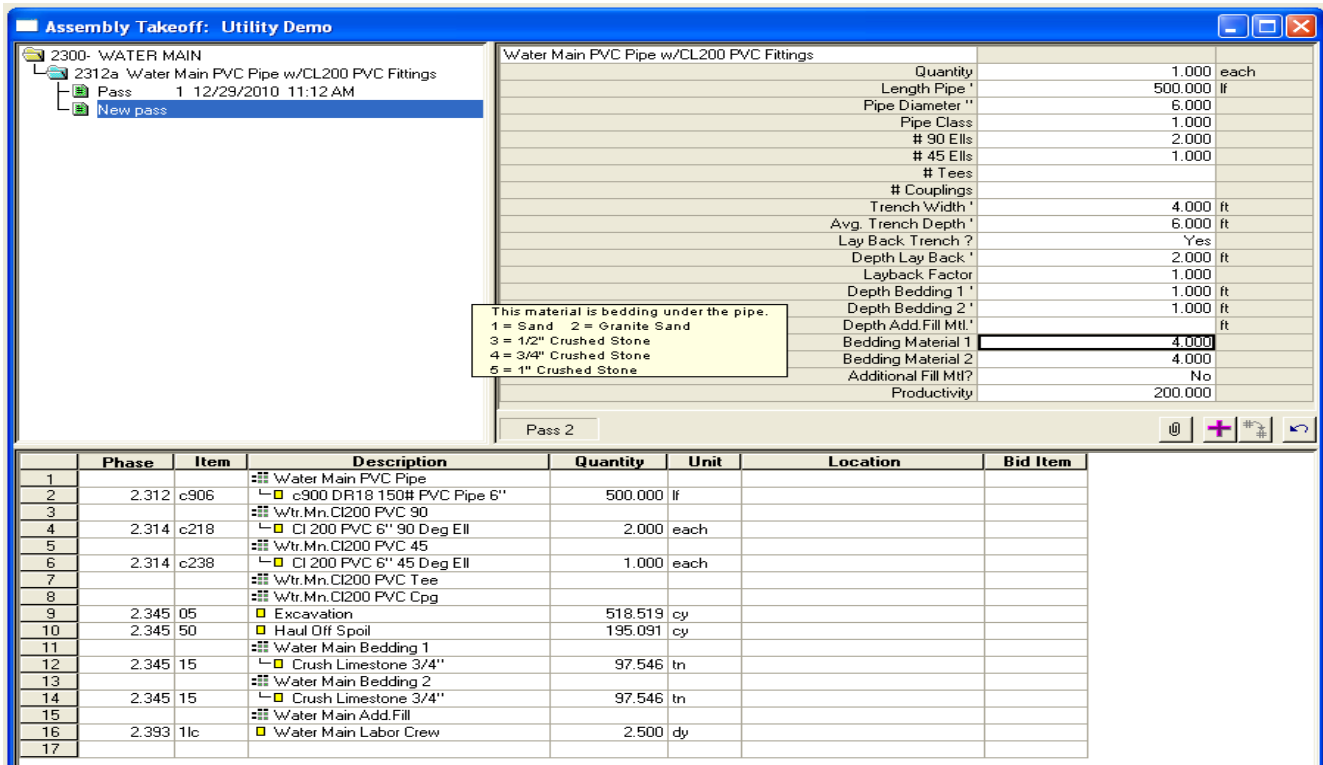
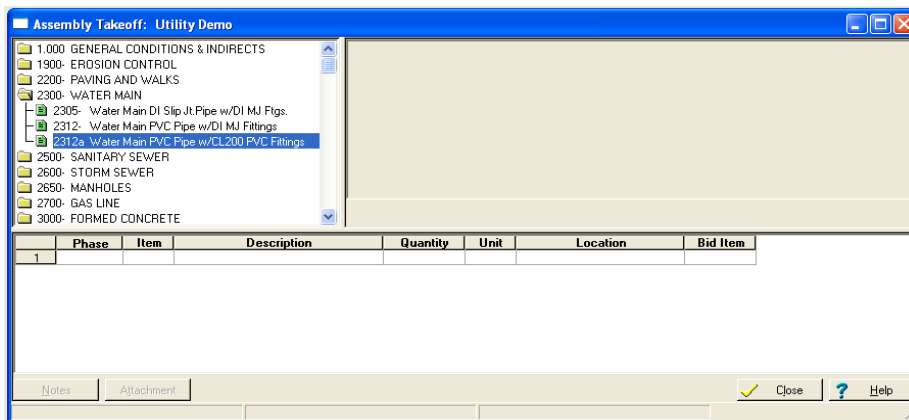
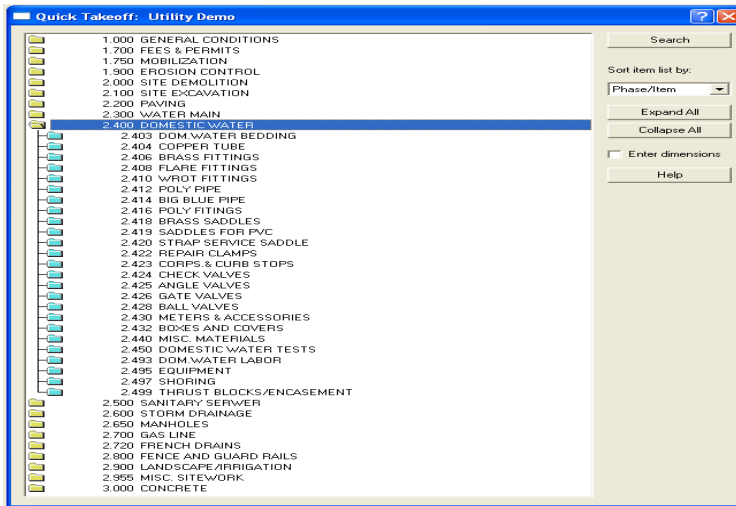
- Over 4500 Items
- Over 186 Phases
- Over 230 Formulas
- Over 60 Material classes
- Over 30 Assemblies

### **Database Group Phases:**

General Conditions	1.000
Fees & Permits	1.700
Mobilization	1.750
Erosion Control	1.900
Site Demolition	2.000
Site Excavation	2.100
Paving	2.200
Water Main	2.300
Domestic Water	2.400
Sanitary Sewer	2.500
Storm Drainage	2.600
Manholes	2.650
Gas Service	2.700
French Drains	2.720
Fence & Guardrails	2.800
Landscape & Irrigation	2.900
Misc. Sitework	2.955
Concrete	3.000

### **Database Assemblies:**

General Conditions	1 Assembly
Mobilization	1 Assembly
Demo Paving	2 Assemblies
Erosion Control	3 Assemblies
Paving & Walks	7 Assemblies
Water Main	3 Assemblies
Sanitary Sewer	1 Assembly
Storm Sewer	1 Assembly
Manholes	1 Assembly
Gas Service	1 Assembly
Formed Concrete	6 Assemblies



Phase	Description	Takeoff Quantity	Labor Productivity	Labor Cost/Unit	Labor Quantity	Labor Amount	Material Price	Material Amount	Sub Price	Sub Amount	Total Amount
	<b>WATER MAIN</b>										
2.312	<b>PIPE - PVC</b>										
	c900 DR18 150# PVC Pipe 6"	500.00 lf	-	-	-	-	5.98 /lf	2,990	-	-	2,990
2.314	<b>PVC FITTINGS</b>										
	CI 200 PVC 6" 90 Deg Ell	2.00 each	0.500 ch / eac	51.98 /ea	1.00 ch	104	54.67 /eac	109	-	-	213
	CI 200 PVC 6" 45 Deg Ell	1.00 each	0.500 ch / eac	51.98 /ea	0.50 ch	52	51.70 /eac	52	-	-	104
2.345	<b>WATER MAIN BEDDING</b>										
	Excavation	518.52 cy	0.033 ch / cy	3.43 /cy	17.11 ch	1,779	-	-	-	-	1,779
	Crush Limestone 3/4"	97.55 tn	0.033 ch /tn	3.43 /tn	3.22 ch	335	20.76 /tn	2,025	-	-	2,360
	Crush Limestone 3/4"	97.55 tn	0.033 ch /tn	3.43 /tn	3.22 ch	335	20.76 /tn	2,025	-	-	2,360
	Haul Off Spoil	195.09 cy	0.100 ch / cy	10.40 /cy	19.51 ch	2,028	-	-	9.00 /cy	1,756	3,784
2.393	<b>WATER MAIN LABOR</b>										
	Water Main Labor Crew	2.50 dy		623.70 /dy	2.50 dy	1,559	-	-	-	-	1,559
	<b>STORM DRAINAGE</b>										
2.601	<b>STORM DRAINAGE BEDDING</b>										
	Excavation	444.44 cy	0.033 ch / cy	3.43 /cy	14.67 ch	1,525	-	-	-	-	1,525
	Crush Limestone 3/4"	30.37 tn	0.033 ch /tn	3.43 /tn	1.00 ch	104	20.76 /tn	631	-	-	735
	Crush Limestone 3/4"	30.37 tn	0.033 ch /tn	3.43 /tn	1.00 ch	104	20.76 /tn	631	-	-	735
	Sand Cushion	100.00 cy	0.033 ch / cy	3.43 /cy	3.30 ch	343	14.53 /cy	1,453	-	-	1,796
	Haul Off Spoil	160.73 cy	0.250 ch / cy	25.99 /cy	40.18 ch	4,177	-	-	9.00 /cy	1,447	5,624
2.602	<b>CL III T&amp;G RCP</b>										
	24" CL III Reinf. Conc. Pipe	250.00 lf	-	-	-	-	27.04 /lf	6,760	-	-	6,760
2.608	<b>RCP FITTINGS</b>										
	24" R.C.P. 45 Deg Bend	2.00 ea	3.000 ch / ea	311.85 /ea	6.00 ch	624	461.04 /ea	922	-	-	1,546
2.635	<b>STORM SEWER LABOR</b>										
	5 Man Pipe Crew	250.00 lf	18.750 lf / ch	5.54 /lf	13.33 ch	1,386	-	-	-	-	1,386