



CSS STREETS & UTILITIES DATABASE

The Construction Support Services Streets & Utilities database has over 2900 items of work covering all phases of street and utility construction including Excavation, Subgrade Preparation, Paving and Utilities.

This database is complete with labor, material and sub contract unit pricing which can be modified by the end user with their specific historical data.

Database Specifications:

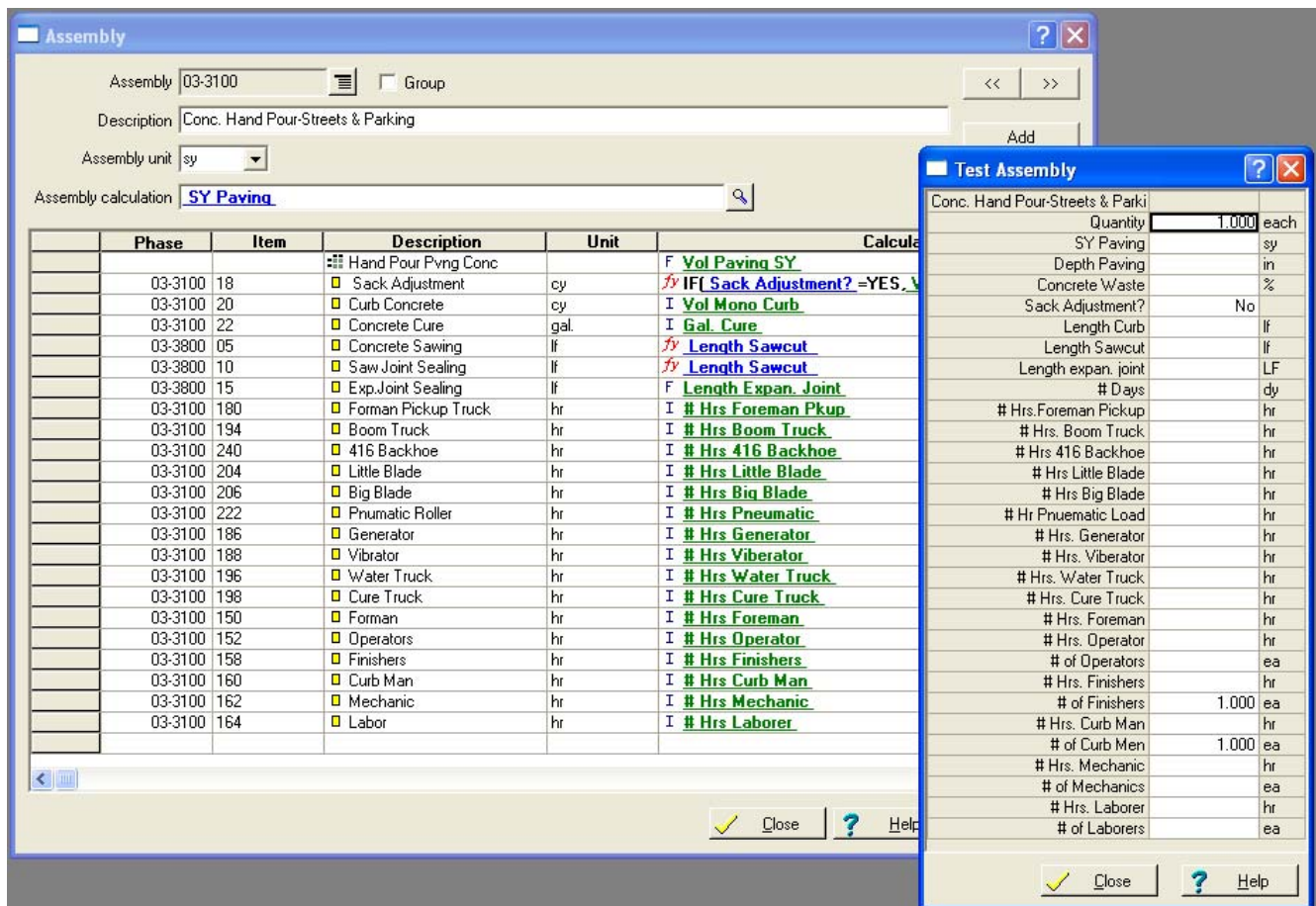
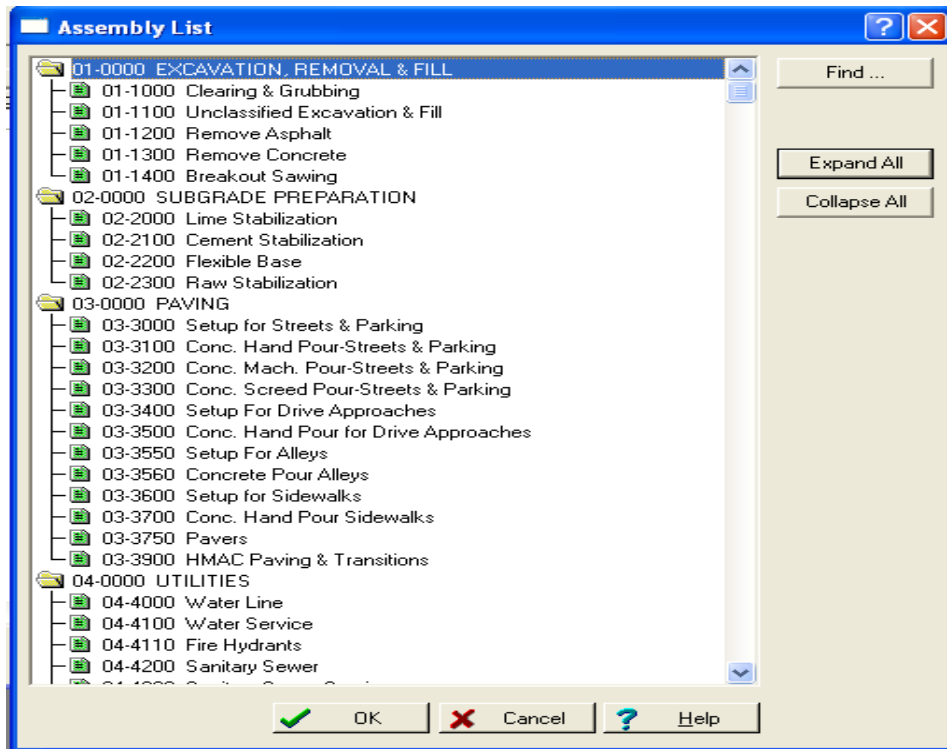
- Over 2900 Items
- Over 60 Phases
- Over 290 Formulas
- Over 60 Material classes
- Over 40 Assemblies

Database Group Phases:

Excavation & Fill	01-0000
Clearing & Grubbing, Excavation & Fill	
Paving Demolition, Breakout Sawing	
Subgrade Preparation	02-0000
Lime Stabilization, Cement Stabilization	
Flex Base, Raw Stabilization	
Paving	03-0000
Concrete Streets & Parking, Approaches	
Alleys, Walks, Pavers, HMAC Paving	
Utilities	04-0000
Water, Sanitary, Storm, Structures	
Channel Work, Bridges, Gas	
Landscape/Irrigation	05-0000
Planting, Irrigation, Erosion Control	
Retaining Walls, Fencing	
Pavement Marking	06-0000
Traffic Control	07-0000
Construction Site Expense	08-0000
General Expense	09-0000

Database Assemblies:

Excavation & Fill	5 Assemblies
Subgrade Preparation	4 Assemblies
Paving	12 Assemblies
Utilities	15 Assemblies
Landscape-Irrigation-Misc	7 Assemblies
Pavement Marking	2 Assemblies
Total	45



Assembly
? X

Assembly: Group

Description:

Assembly unit:

Assembly calculation:

Phase	Item	Description	Unit	Calcu
		San Sewer Pipe		* 1
		Specials	ea	# of Specials
		Bedding 1 San.Sewer		Vol Bedding 1
		Bedding 2 San.Sewer		Vol Bedding 2
04-4200	120	Forman	hr	# Hrs Foreman
04-4200	152	Operators	hr	# Hrs Operator
04-4200	154	Pipe Layers	hr	# Hrs Pipe Layer
04-4200	162	Mechanic	hr	# Hrs Mechanic
04-4200	164	Laborer	hr	# Hrs Laborer
04-4200	180	Forman Pickup Truck	hr	# Hrs Foreman Pkup
04-4200	182	Compressor	hr	# Hrs Compressor
04-4200	186	Generator	hr	# Hrs Generator
04-4200	192	Mechanic Truck	hr	# Hrs Mech Truck
04-4200	194	Boom Truck	hr	# Hrs Boom Truck
04-4200	196	Water Truck	hr	# Hrs Water Truck
04-4200	214	Hand Tamp. or Compactor	hr	# Hrs Hand Tamp
04-4200	216	Trench Roller	hr	# Hrs Trench Roller
04-4200	218	Little Sheeps Foot Roller	hr	# Hrs Ltl Sheeps Ft.
04-4200	234	963 Loader	hr	# Hrs 963 Loader
04-4200	238	Trench Box	hr	# Hrs Trench Box
04-4200	240	416 Backhoe	hr	# Hrs 416 Backhoe
04-4200	242	312 Track Hoe	hr	# Hrs 312 Trackhoe
04-4200	244	320 Track Hoe	hr	# Hrs 320 Trackhoe
04-4200	246	325 Track Hoe	hr	# Hrs 325 Trackhoe
04-4200	248	345 Track Hoe	hr	# Hrs 345 Trackhoe

Test Assembly
? X

Sanitary Sewer	Quantity	1.000	each
Length Pipe '			lf
# of Specials			ea
Trench Width '			ft
Depth Bedding 1 '			ft
Pipe Diameter "			in
Depth Bedding 2 '			ft
# Days			dy
# Hrs. Foreman			hr
# Hrs. Operator			hr
# of Operators			ea
# Hrs. Pipe Layer			hr
# of Pipe Layers			ea
# Hrs. Mechanic			hr
# of Mechanics			ea
# Hrs. Laborer			hr
# of Laborers			ea
# Hrs.Foreman Pickup			hr
# Hrs. Compressor			hr
# Hrs. Generator			hr
# Hrs. Mech. Truck			hr
# Hrs. Boom Truck			hr
# Hrs. Water Truck			hr
# Hr Hand Tamp			hr
# Hrs. Trench Roller			hr
# Hrs. Ltl Sheeps Ft			hr
# Hrs. 963 Loader			hr
# Hrs. Trench Box			hr
# Hrs 416 Backhoe			hr
# Hrs 312 Trackhoe			hr
# Hrs 320 Trackhoe			hr
# Hrs 325 Trackhoe			hr
# Hrs 345 Trackhoe			hr