



CSS GENERAL CONTRACTOR DATABASE

The Construction Support Services GC database has over 7000 items of work from General Conditions to Electrical. We offer two databases arranged in either the 1995 or the 2004 divisions of the CSI Master Format.

With both databases we have utilized WBS Codes to assign all of the items in the database to the opposing CSI Master Format as well as the UniFormat numbering system.

This database is complete with labor productivity, material unit pricing and Subcontractor pricing which can be modified by the end user with their specific historical data.

The databases include assemblies with extensive assembly help for every division of work. Most of the assemblies pertain to Sitework, Concrete, Masonry, Wood Framing, Lt.Ga. Framing and Drywall.

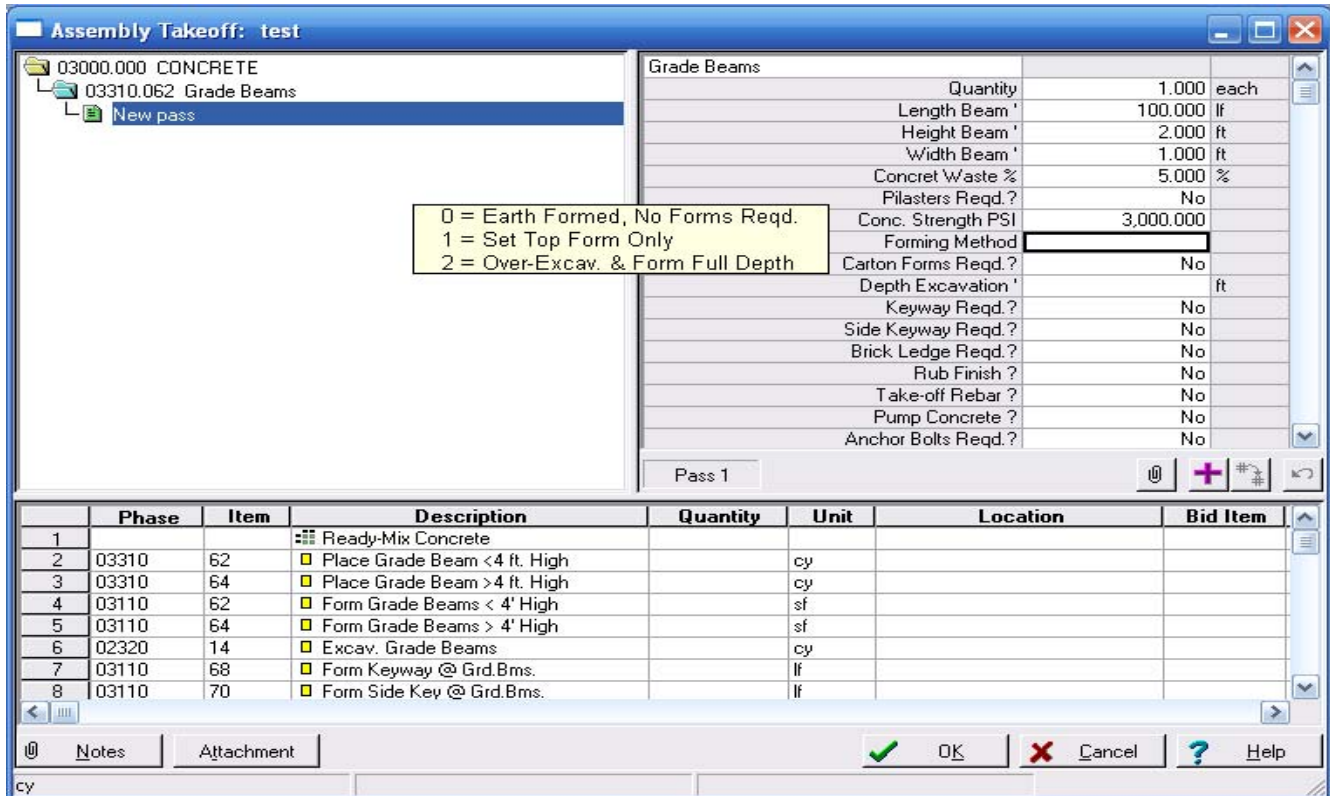
Database Specifications

Over 7000 Items
 Over 1000 Formulas
 Over 300 Assemblies, 9 Models

<u>Division</u>	<u># of Assemblies</u>
Conceptual	48
General Conditions	2
Site Work	46
Concrete	53
Masonry	7
Metals	12
Wood & Plastics	40
Thermal & Moist.	17
Doors & Windows	5
Finishes	21
Specialties	11
Equipment	2
Furnishings	1
Special Construction	2
Elevators	1
Mechanical	40
Electrical	<u>11</u>
Total	319

Models

Site Improvements
 Tilt-Wall Office Shell (Multi-Story)
 Tilt-Wall Warehouse
 Parking Garage (Concrete CIP)
 Small Box Retail
 Office / Medical 1 Story Shell
 Finish Out Wood Frame
 Finish Out Lt.Ga. Framed
 Pre-Engineered Metal Building



Phase	Description	Takeoff Quantity	Labor Price	Labor Amount	Material Price	Material Amount	Sub Price	Sub Amount	Equip Price	Equip Amount	Total Cost/Unit	Total Amount
	SITWORK											
02320	BUILDING EXCAVATION											
	Excav. Grade Beams	44.44 cy	-	-	-	-	-	-	2.81 /cy	125	2.81 /cy	125
	Haul-off Spoil	23.44 cy	-	-	-	-	8.10 /cy	190	-	-	8.10 /cy	190
	Backfill/Compact	34.33 cy	18.72 /cy	643	-	-	-	-	-	-	18.72 /cy	643
	Level & Grade	100.00 sf	0.19 /sf	19	-	-	-	-	-	-	0.19 /sf	19
	CONCRETE											
03110	FORMWORK											
	Form Grade Beams < 4' High	400.00 sf	2.08 /sf	832	-	-	-	-	-	-	2.08 /sf	832
	Form Keyway @ Grd.Bms.	100.00 lf	0.47 /lf	47	-	-	-	-	-	-	0.47 /lf	47
	3/4" BB Form Plywood	400.00 sf	-	-	22.00 /sf	275	-	-	-	-	0.69 /sf	275
	Dimension Form Lumber	600.00 bf	-	-	0.53 /bf	317	-	-	-	-	0.53 /bf	317
	Keyway Matl.	100.00 lf	-	-	0.28 /lf	28	-	-	-	-	0.28 /lf	28
03150	CONCRETE ACCESSORIES											
	12" Snap Tie	120.00 ea	-	-	0.55 /ea	66	-	-	-	-	0.55 /ea	66
03310	CAST IN PLACE CONCRETE											
	3000 PSI HR	7.41 cy	-	-	72.00 /cy	533	-	-	-	-	72.00 /cy	533
	Place Grade Beam <4 ft. High	7.41 cy	5.20 /cy	39	-	-	-	-	-	-	5.20 /cy	39
03350	CEMENT FINISHING											
	Finish Grade Beam Top	100.00 sf	0.21 /sf	21	-	-	-	-	-	-	0.21 /sf	21
	BFP Vertical	400.00 sf	0.03 /sf	10	0.02 /sf	7	-	-	-	-	0.04 /sf	17
03390	CURING & PROTECTING											
	Curing Compound Vert. Surface	400.00 sf	0.03 /sf	10	0.03 /sf	11	-	-	-	-	0.05 /sf	22
	METALS											
05510	MISC. METALS											
	Embedded Anchor Bolts	25.00 ea	3.64 /ea	91	-	-	-	-	-	-	3.64 /ea	91

Example of the Assembly Help files attached to each assembly

