

Sage Construction and Real Estate Solutions

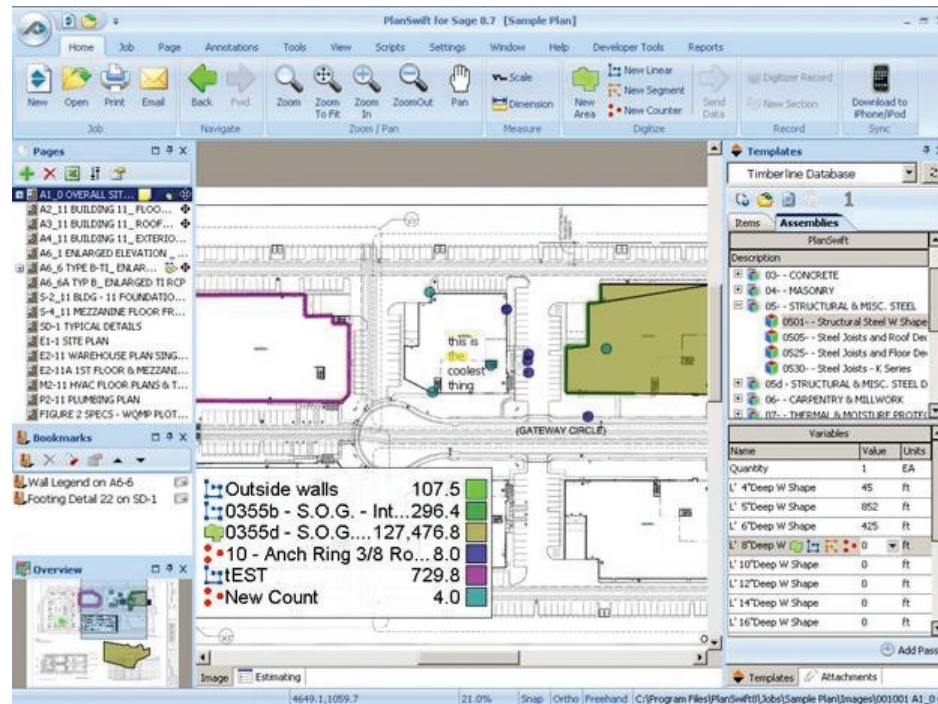
PlanSwift for Sage

PlanSwift now integrates with Sage Estimating Standard and Extended solutions.

Join the thousands of companies who are already using PlanSwift to perform material takeoffs digitally, on a computer screen, in one-tenth the time it took to complete them on paper.

With PlanSwift's visual point-and-click interface, you can drag and drop individual products or assembled product groups directly onto a digitized blueprint. PlanSwift calculates the takeoffs automatically—saving you valuable time and effort.

And now, tightly integrated Sage Estimating* assemblies and items are pulled directly from the estimating database and embedded in the PlanSwift for Sage product. The variable pane is displayed, dimensions and quantities calculated onscreen, then transferred directly to Sage Estimating. The process couldn't be easier.



BENEFITS

- Save time and increase productivity using electronic plan and onscreen takeoff tools
- Reduce costs by eliminating expenses for duplicating and shipping paper plans
- Improve collaboration using comparative overlays with the ability to share and email plans and supporting job details
- Increase productivity and eliminate duplicate data entry as a result of tight integration between PlanSwift for Sage and Sage Estimating

◀ From within PlanSwift for Sage, you're able to work directly with the Sage Estimating databases. Once dimensions are calculated, the values are automatically sent to Estimating—saving time and increasing productivity.

With PlanSwift for Sage you can:

- Point and click onscreen, using your mouse to calculate square footage, lineal footage, and/or item counts.
- Calculate curves (arcs) and cut-outs.
- Identify takeoffs easily using labels and colors.
- Easily navigate through plans using the overview window.
- Maintain accuracy with the magnification tool.
- Load all major CAD and image file types.
- Print and send plans effortlessly.
- Track changes with comparative plan overlays.
- Work with Sage Estimating databases directly from within PlanSwift for Sage, including the creation of one-time items.
- Transfer calculated dimension directly from PlanSwift for Sage to Sage Estimating automatically.

With the integration of these two powerful, market-leading solutions, you will calculate takeoffs with greater speed and accuracy, reduce job costs and risks, and win more bids. For a free trial of PlanSwift for Sage or to learn more about Estimating integration, contact CPA Technology at **610-862-1998**.

*Standard and Extended